



Bowlers Yard

Earls Barton, Northamptonshire

oriordanbond
SALES & LETTINGS



Bowlers Yard

Earls Barton
NN6 0JY

Price
£270,000

O'Riordan Bond is delighted to offer for sale this immaculately presented three double bedroom town house with open plan kitchen/sitting/ room, under floor heating, solar panels and Juliette balcony to take in the rear views in a private courtyard, situated in the very heart of Earls Barton village with excellent amenities.

Accommodation comprises entrance hall, cloakroom/WC and an open plan kitchen/sitting/dining room with French doors to the rear garden. To the first floor are two double bedrooms with built-in wardrobes to the second bedroom and a family bathroom. To the second floor is a master double bedroom suite with dressing area with built-in wardrobes and en-suite shower room. Outside is an enclosed southerly facing rear courtyard garden with potted plants and flowers and wooden shed for storage. To the front are two allocated parking spaces. Further benefits include uPVC double glazing and gas radiator heating. (A/1018/S)

- Immaculate three bedroom town house
- En-suite and dressing area to master bedroom
- Open plan kitchen/sitting/dining room
- Gas radiator heating
- Enclosed south facing courtyard rear garden
- Two allocated parking spaces







Additional information

- Council Tax Band: C
- Energy Efficiency Rating: B

Viewing

Viewing strictly by appointment – details below

Disclaimer

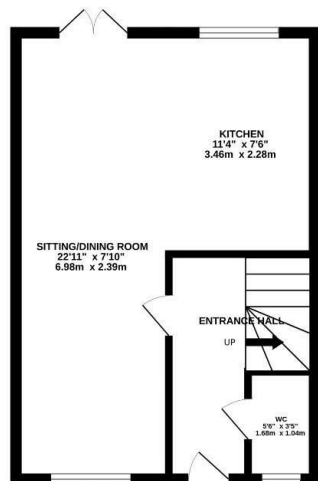
O'Riordan Bond Estate Agents Limited has not tested apparatus, equipment, fittings or services and so cannot verify they are in working order. The buyer is advised to obtain verification from their solicitor or surveyor.

O'Riordan Bond Earls Barton Sales
01604 810088

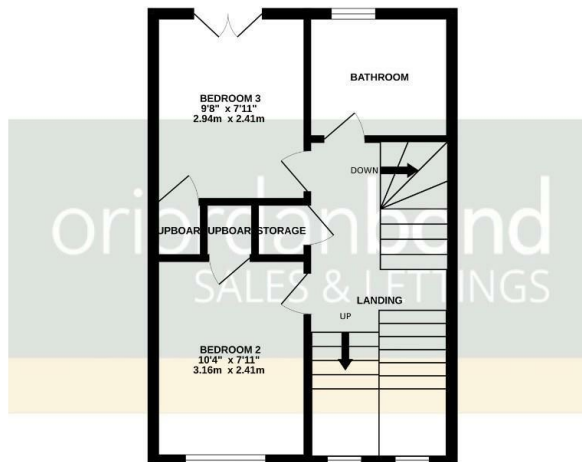
earlsbarton@oriordanbond.co.uk



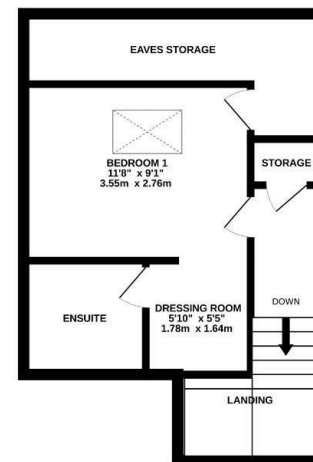
GROUND FLOOR



1ST FLOOR



2ND FLOOR



TOTAL FLOOR AREA : 1018 sq.ft. (94.6 sq.m.) approx.

Whilst every attempt has been made to ensure the accuracy of the floorplan contained here, measurements of doors, windows, rooms and any other items are approximate and no responsibility is taken for any error, omission or mis-statement. This plan is for illustrative purposes only and should be used as such by any prospective purchaser. The services, systems and appliances shown have not been tested and no guarantee as to their operability or efficiency can be given.

Made with Metropix ©2024